

SLAMcore Blog

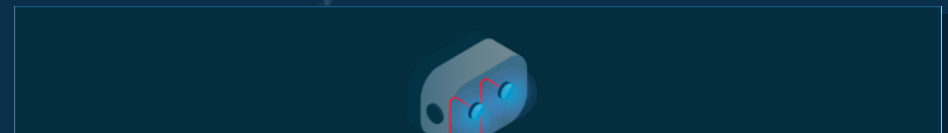
Doing what Big Tech can't

The robotics industry is a broad and diverse sector. It includes academics and 'pure' engineers pushing the boundaries of what's possible;[...]

[VIEW ARTICLE](#)

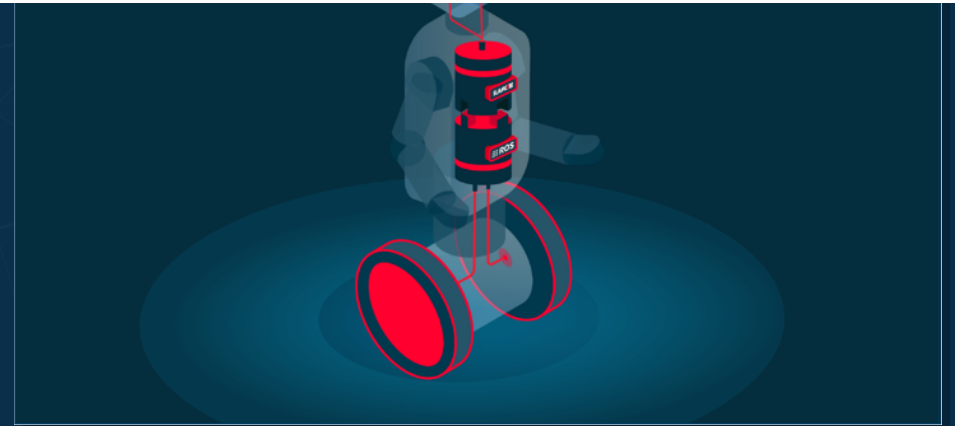


Extending ROS integration for faster development of Robots for Good



The Robot Operating System, or ROS, has played a fundamental role in the development of robots as solutions to real-world challenges in many different[..]

[VIEW ARTICLE](#)



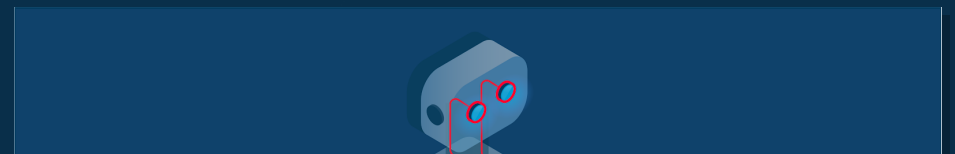
Customized SLAM parameter presets save months of development time

Changes in lighting, large spaces or uniform environments with few distinguishing features can all present significant challenges to robots trying to[..]

[VIEW ARTICLE](#)



The whole will be greater than the sum of the parts with new sensor in SLAMcore's array



Wheel Odometry to be added for Visual-Inertial Kinematics in upcoming software release

Wheel odometers are sensors that provide data on the rotation of[...]

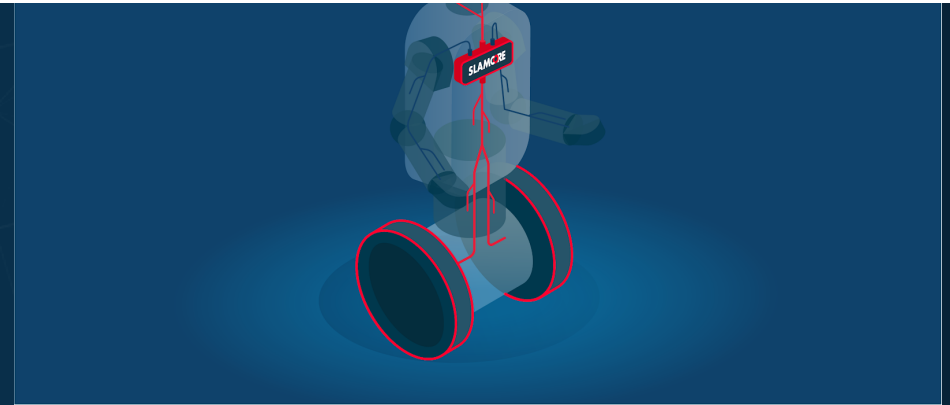
[VIEW ARTICLE](#)

Joining the NVIDIA Jetson Ecosystem to provide Robot and Product developers with Visual SLAM 'Out-of-the-box'

Today, I am pleased to announce that SLAMcore has joined NVIDIA's Jetson Ecosystem. Through this official partnership we are offering our spatial[...]

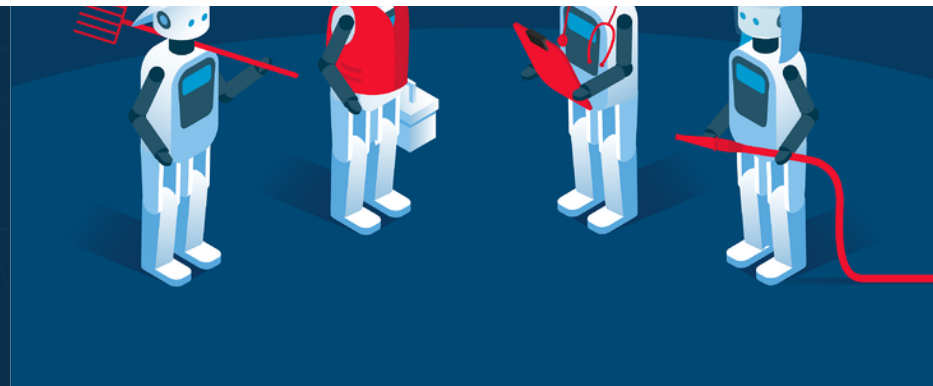
[VIEW ARTICLE](#)

This is Engineering!



Today, 4th November, is “[This is Engineering Day](#)” in the UK. It is an important element of The Royal Academy of Engineering’s [ongoing programme](#) to[.]

[VIEW ARTICLE](#)



SLAMcore appoints Chief Commercial Officer to drive next wave of growth

Simon Aspinall joins leadership team

SLAMcore’s mission is to deliver commercial spatial intelligence software which is highly accurate and[.]

[VIEW ARTICLE](#)



Creating maps for robots to share and reuse



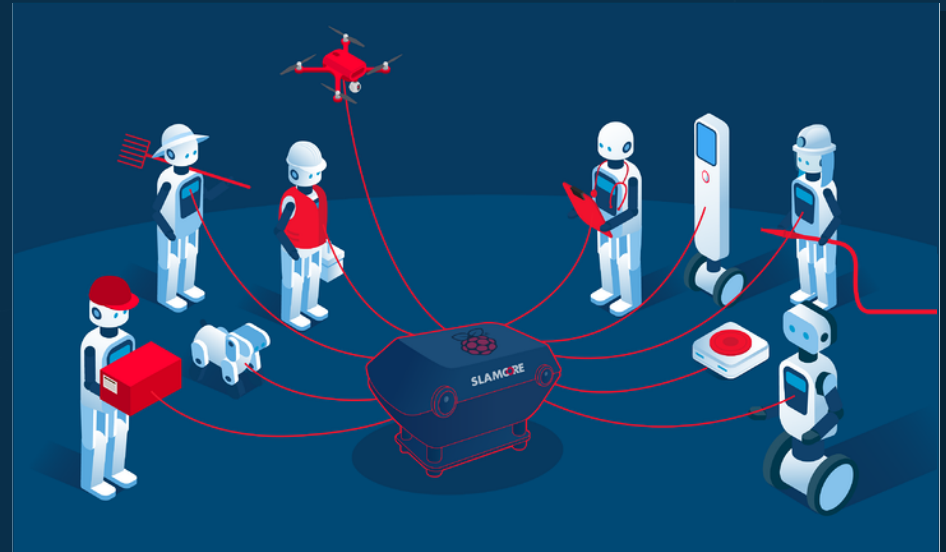
The ability of a robot to map its surroundings and accurately locate itself using that map is fundamental for any autonomous scenario. But it is only[.]

[VIEW ARTICLE](#)



Arm AI Partner programme opens door to a growing list of hardware partners

[VIEW ARTICLE](#)



Visit us at the 2020 Embedded Vision Summit



As winners of the [Vision Tank Start-Up](#) competition in June, we are delighted to have been invited to exhibit at the [Embedded Vision Summit](#) which runs[..]

[VIEW ARTICLE](#)



[ALL POSTS](#)

[NEXT](#)

Enquire

We're on a mission to help ambitious OEMs. Leading the market requires robust, efficient and affordable solutions. Find out how you can integrate our proprietary technology into your autonomous robot or drone platform.

[GET IN CONTACT](#)

Subscribe to our mailing list

Stay up-to-date with SLAMcore product launches.

SUBSCRIBE

PRODUCTS AND SERVICES

OUR TECHNOLOGY

SLAMCORE USE CASES



ABOUT

CAREERS

CONTACT

SUBSCRIBE

SLAMCORE LIMITED

Unit 1, 215-221 Borough High Street
London | SE1 1JA

© 2020 SLAMcore Limited
All Rights Reserved | [Privacy policy](#).

SLAMCORE